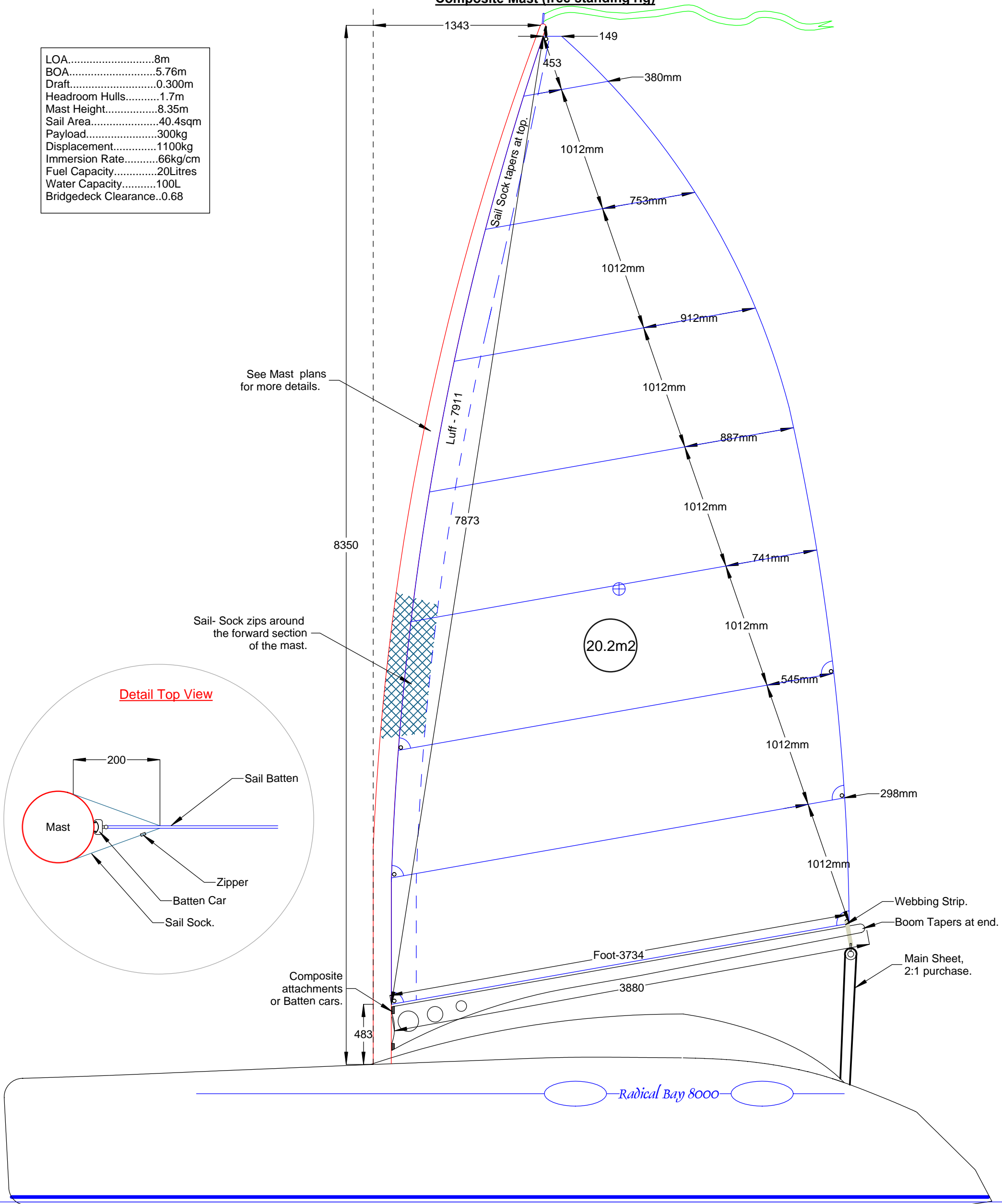
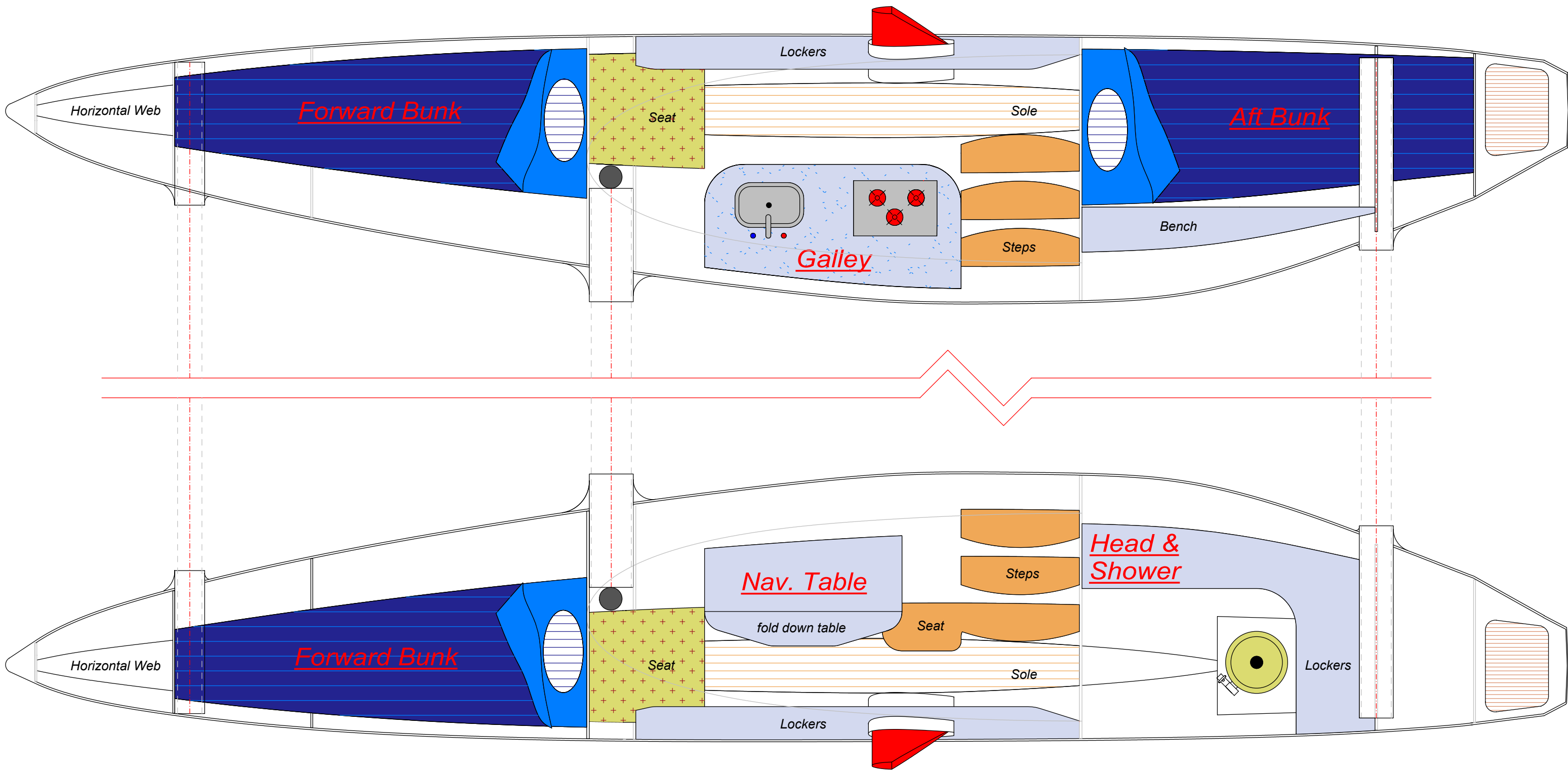
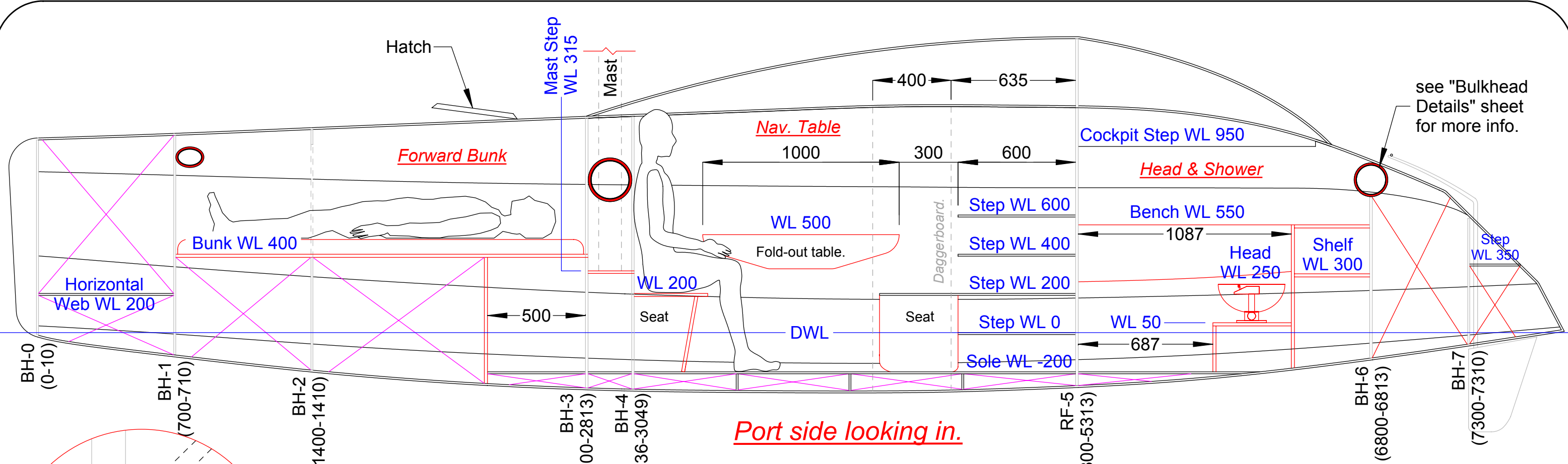


Composite Mast (free standing rig)

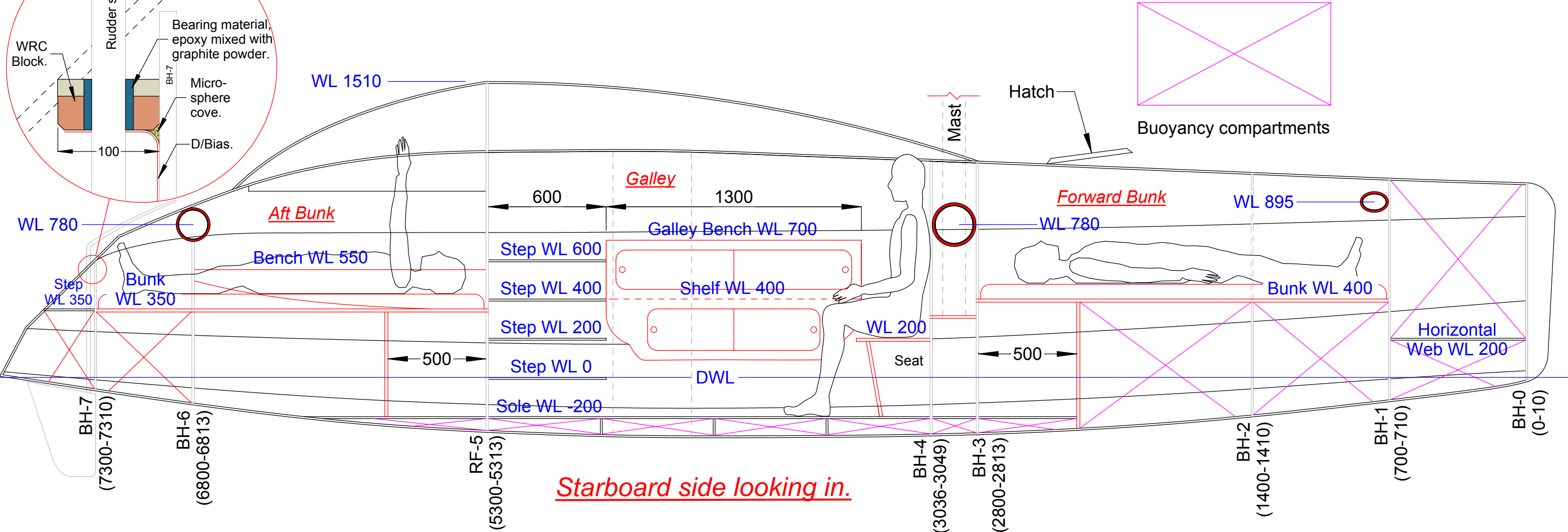
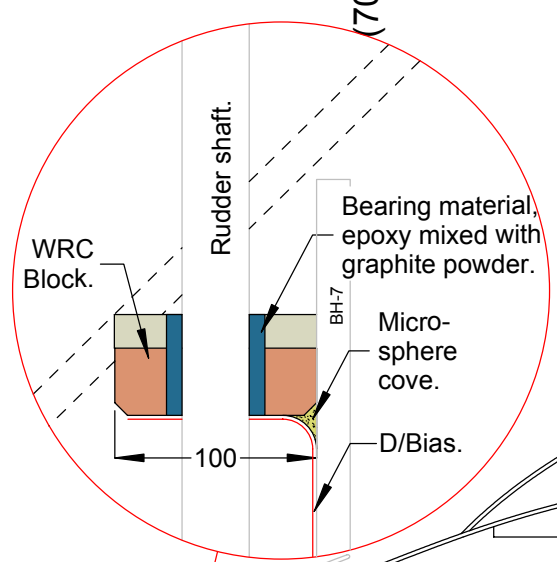
LOA.....	8m
BOA.....	5.76m
Draft.....	0.300m
Headroom Hulls.....	1.7m
Mast Height.....	8.35m
Sail Area.....	40.4sqm
Payload.....	300kg
Displacement.....	1100kg
Immersion Rate.....	66kg/cm
Fuel Capacity.....	20Litres
Water Capacity.....	100L
Bridgedeck Clearance..	0.68

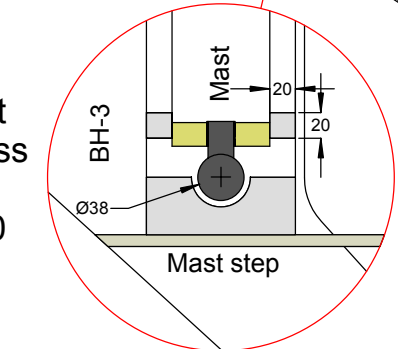
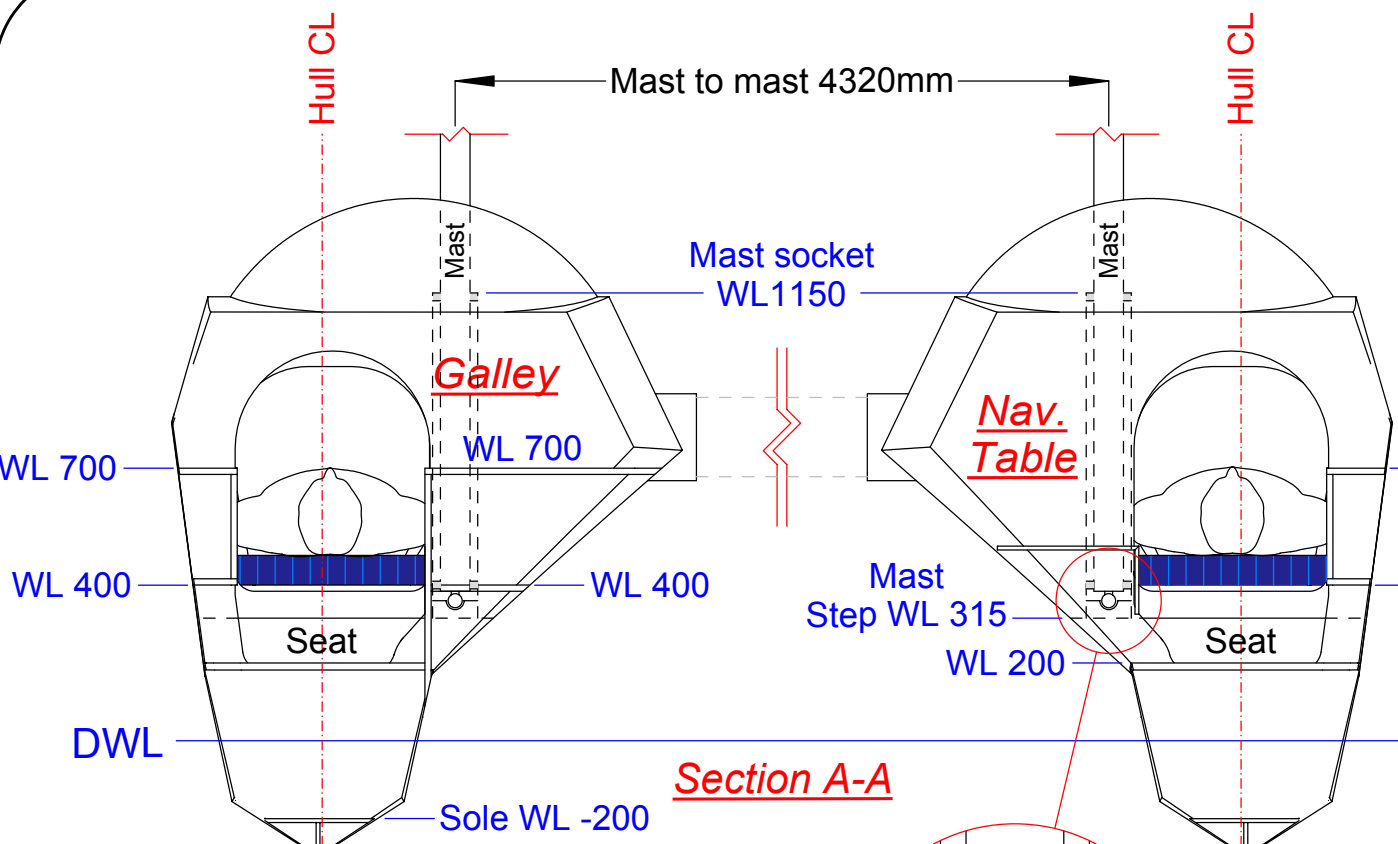




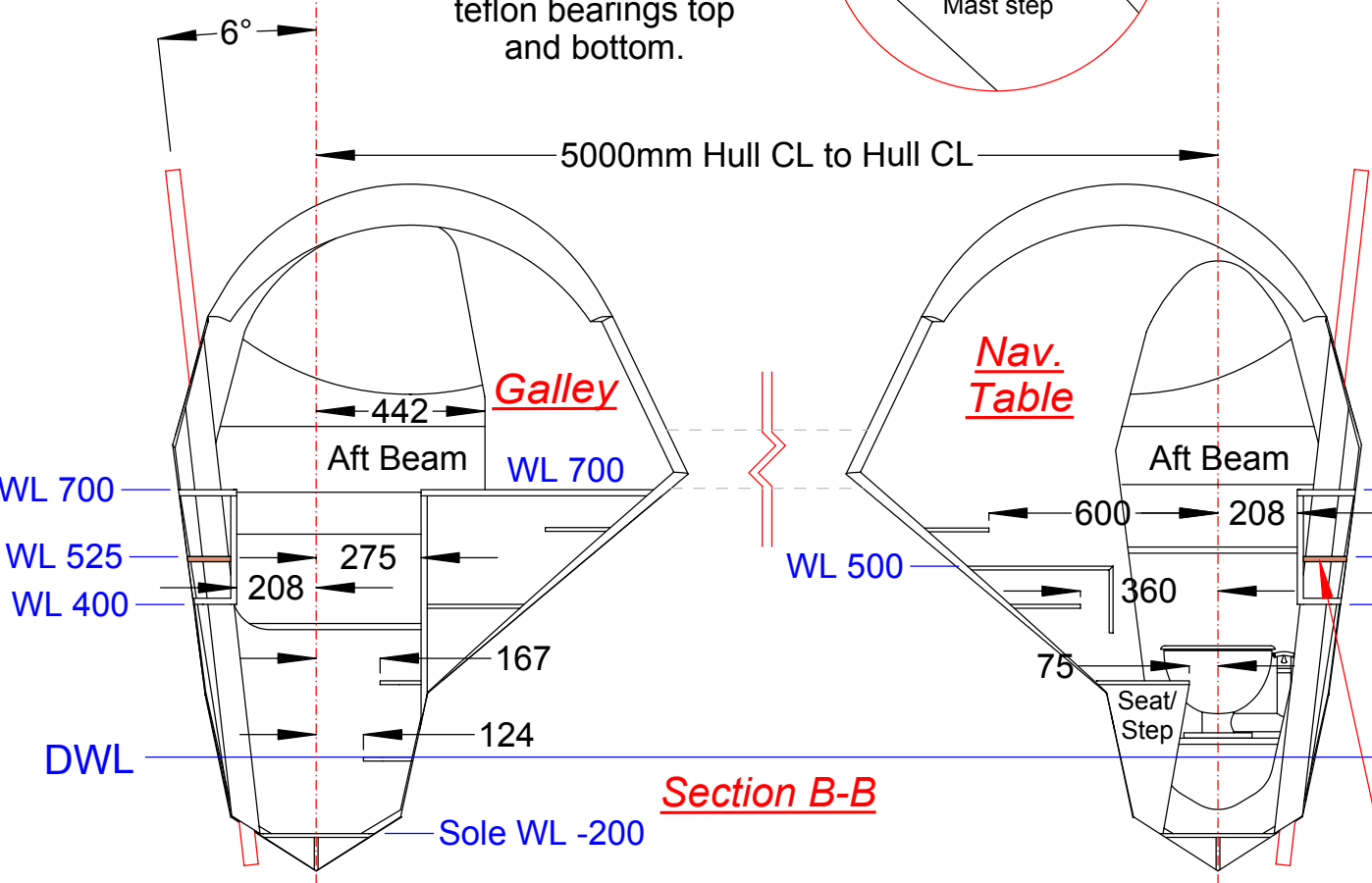
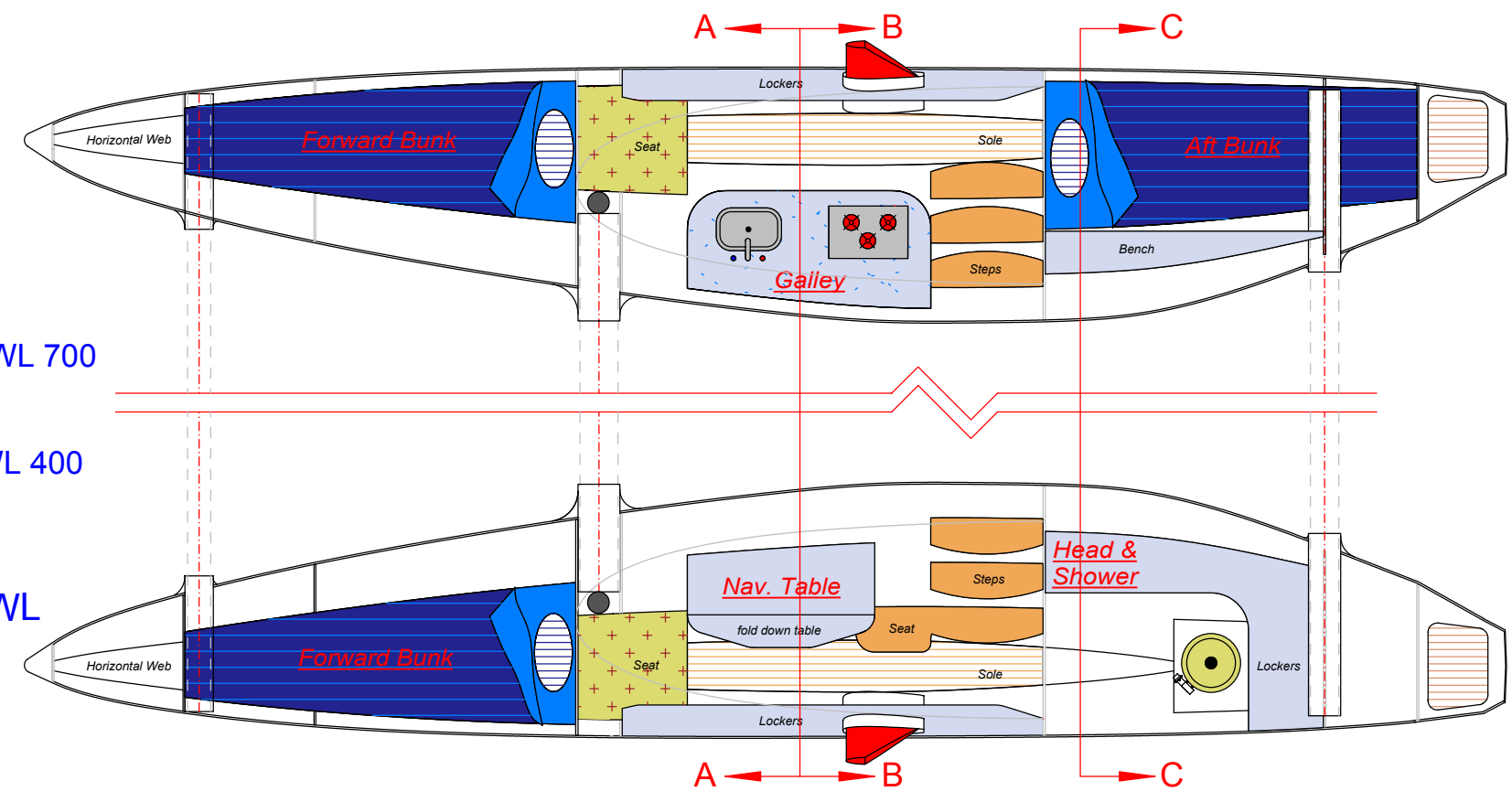


see "Bulkhead Details" sheet for more info.

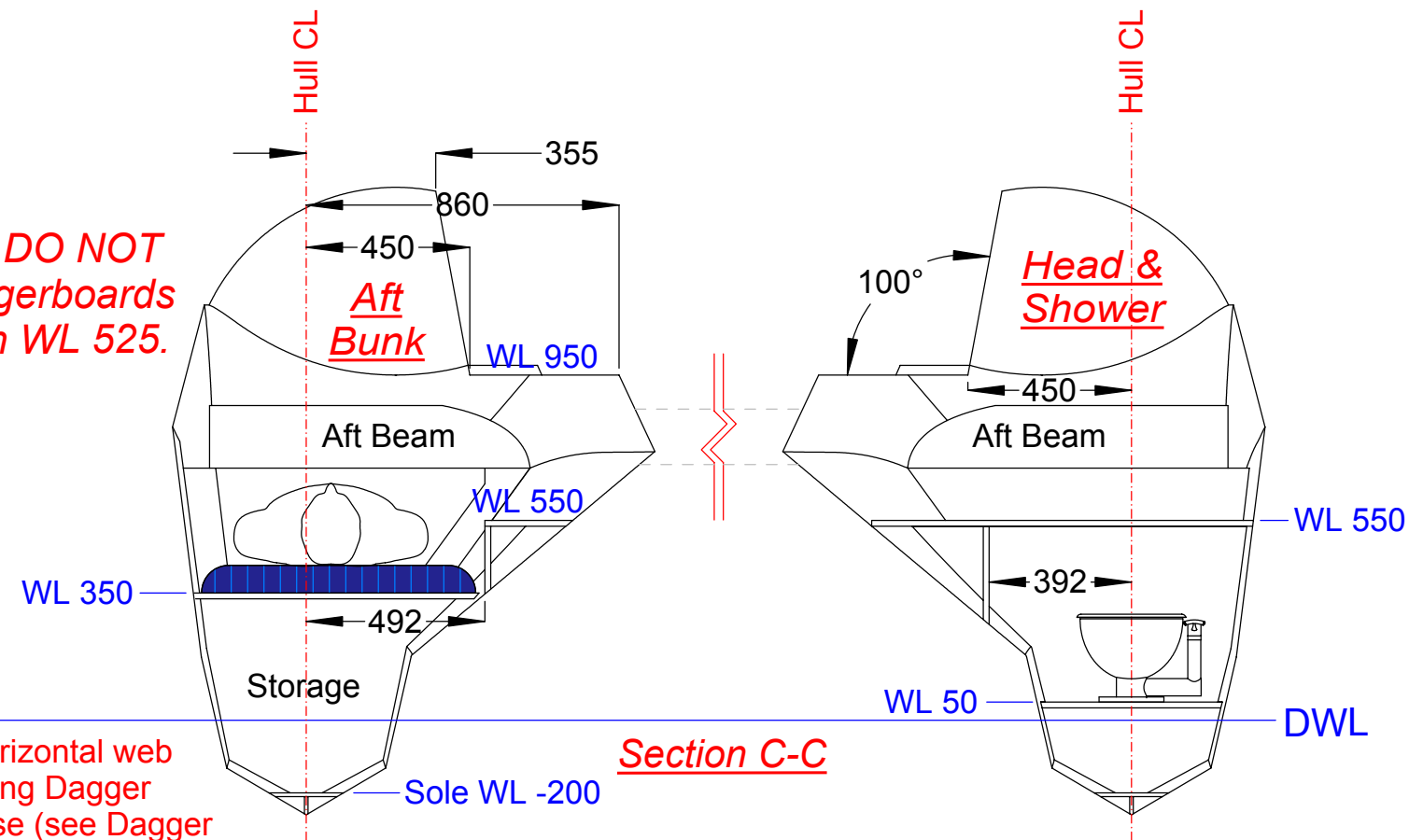




Glue 38mm tow ball into base of mast. Make mast base from teflon with recess to take ball. Mast to be supported by two 20 x 20 teflon bearings top and bottom.



Warning: DO NOT lower daggerboards lower than WL 525.



13mm horizontal web surrounding Dagger board case (see Dagger board & Case drawing).