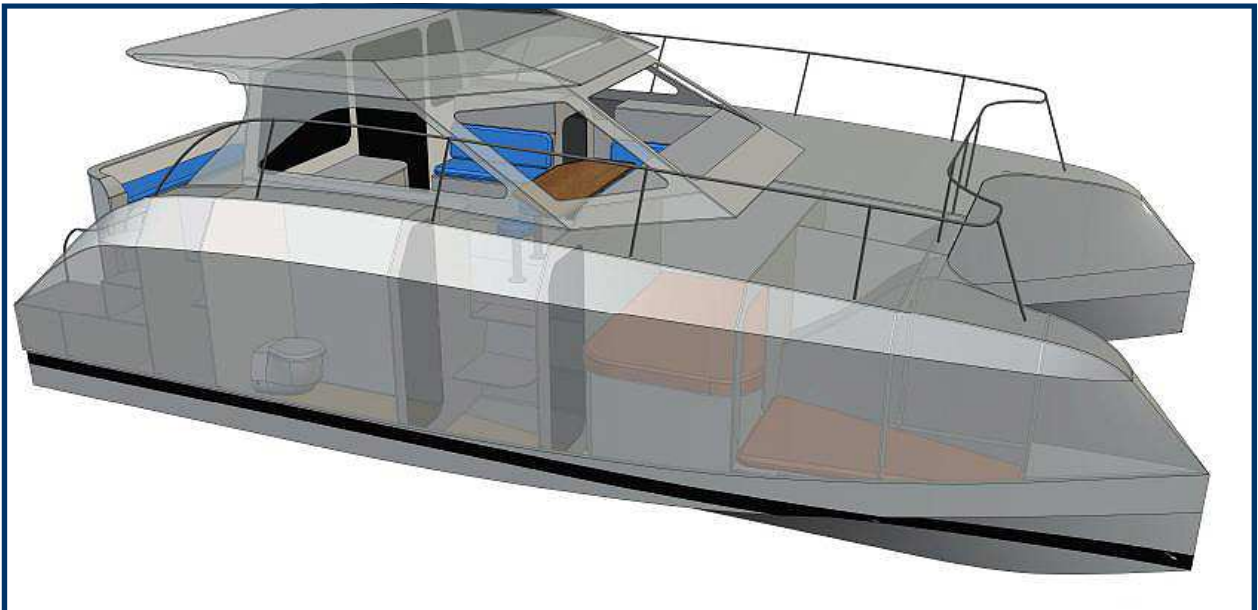


Growler GTR 8800

Growler GTR 8800

STUDY PLANS



CONTENTS

PAGE 4	DESIGN OVERVIEW & SPECS
PAGES 6/7	CAD RENDERS
PAGES 8/9	LAYOUT AND PROFILE
PAGE 10	MATERIAL LIST
PAGE 11 - 12	NOTES FROM THE DESIGNER
PAGE 13	CONSTRUCTION PLANS
PAGE 14	HOW TO ORDER



Hello and thank you for showing interest in our Design.

Schionning Designs is a family based Australian business, we are very passionate about our designs and continually strive to offer the best options to get you out there and make your dream a reality.

Choosing the right design can be a real challenge, there are so many options and variations and purposes a boat needs to meet. We will help you to determine which design will best suit your lifestyle and purpose, also your budget. We have plenty of options!

These Study plans contain a lot of information directed at the "OWNER BUILDER", the aim being to show you how simple and achievable it really is and to help you determine whether you will be able to do it yourself. Be assured, hundreds of absolute novices have and are doing it so if you really want to build a boat, go for it, we will help you all the way.

If you are NOT an owner builder and would like to buy one of our designs, we work closely with several excellent boat building yards in Australia and overseas. Using one of these builders to build a custom boat for you, rather than buying a molded production boat is very rewarding, you can get exactly what you want and you'll be surprised just how well priced this can be too. Later re-sale value is high and the quality of a hand build composite boat, built by a recommended builder far out strips any production process in terms of strength, quality and lightness (therefore performance).

We look forward to hearing from you once you've studied the following pages. We have not included kit pricing due to the many variations and options so please email or call us and we'll furnish these on request.

Good luck with your research and project.

Jeff, Lorraine, and Ben Schionning



Design Overview...

Specifications:

LOA	8.80 Metres
BOA	4.8 Metres
Draft	0.300 Metres
Displacement	3700 Kilograms
Headroom—Bridgedeck	1.890 Metres
Headroom—Hulls	1.850 Metres
Bridgedeck Clearance	0.550 Metres
Motor Recommendation	2 X 115HP Outboards
Motoring Speed—Cruise	15—20 Knots
Motoring Speed—Top	28—30 Knots
Fuel Capacity	2 x 200 Litres
Water Capacity	200 Litres

Fast, Fun and Ballsy, our new Growler GTR8800 power cat is perfect for week-ending and coastal cruising. You'll be very surprised at how much room is inside this 'small' cat – there is plenty of accommodation for a big family, including a good sized private head and shower. If you're more likely to enjoy fishing with a bunch of your mates, we've got that covered too.

We have used our new "Whisper" hull shape on the GTR8800, a development from the VT hull form using the wide hull beam but with "soft" V entry giving a similar seaworthy ride but having the advantage of shallower draft for shallow areas and beaching. Quick to plane, we are using 115hp outboard engines on Stealth 1 she will cruise comfortably at around 18 to 20 knots with a top speed of 28 – 30 knots expected, but if you use more power, you'll get more speed. The "Whisper" hulls will deliver incredible comfort and safety, even in rough sea conditions, much like our well proven VT's. The wide hulls offer very good volume inside providing unusually good accommodation in a cat this size and yet still offer very good fuel economy.

At 18 knots cruising we expect she'll use about 2 litres per nautical mile. Cruising more slowly you'll do better of course but you do have the option to turn up the speed when you simply must get home or beat that bad weather or blast through that breaking bar. There's no doubt this will happen when you're out boating sooner or later, and what a pleasure it is having a boat that can get you home quickly and safely.

The GTR8800 is a sleek looking cat with a sedan style cabin, inside you'll find very good accommodation, a decent saloon and galley on the bridgedeck, two double cabins with queen berths and a settee fwd with storage area/possible bunk. There is a separate kid's cabin aft with two single berths. Aft in the star-board hull is a generous bathroom with head and shower. All this- and more as they say. She has good headroom throughout "not bad" for a neat little coastal rocket. She has a very generous open cockpit ideal for fishing or swimming from and enough area for deck chairs for sundowners, the steering station is set under the shade top fully sheltered in bad weather with a good view forward.

The window directly in front drops down fully for better visibility and an ideal serving hatch from the galley. The helm seat could make a great drinks ice-box. This model does not have a Flybridge but this is an option we can offer. The roof does offer a flat sunbathing area or with the trimmed surrounds provides an area to store and carry a few toys like surfboards, fishing rods, ski tube etc. (roof rack).

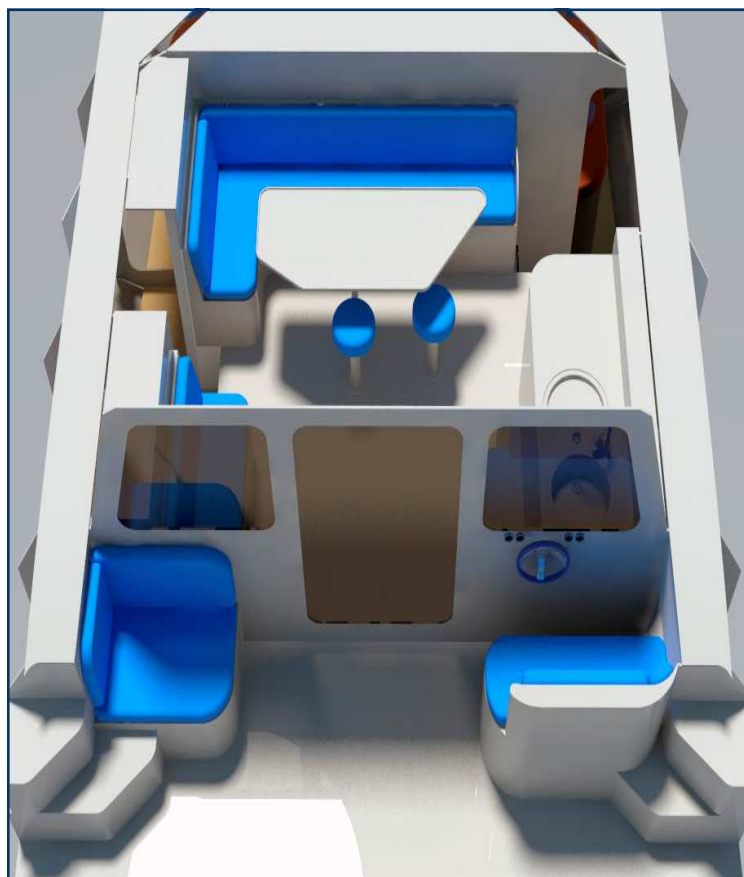
Side decks allow you access to the big foredeck area for sunbathing or just getting away from the fishermen. A trampoline can be added forward this would suit a family with young kids. An opening forward hatch in the middle window can give good ventilation and kid access forward.

Designed for the owner builder, anyone can build this boat - construction doesn't get easier. The entire boat is built from ATL Composites DuFlex™ panels



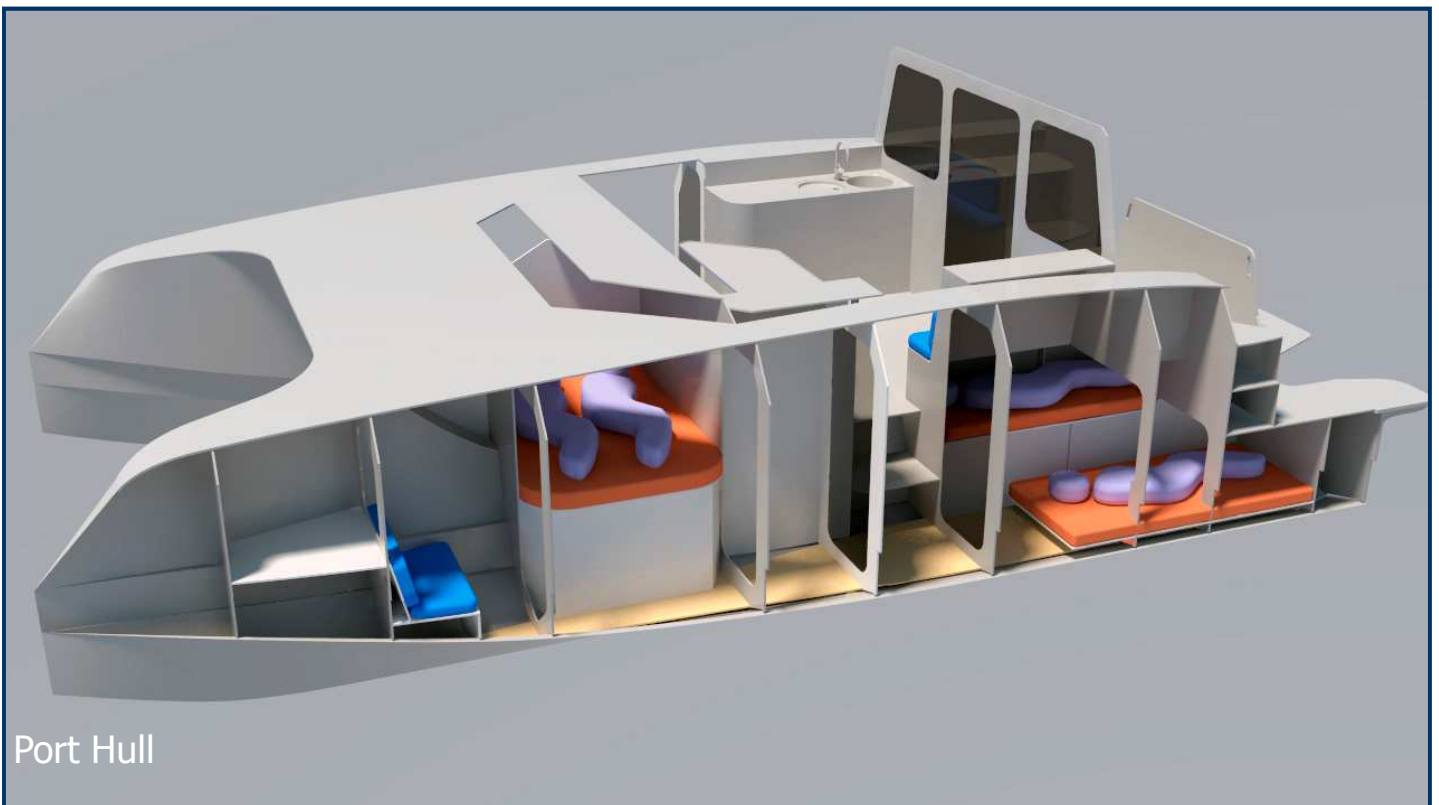
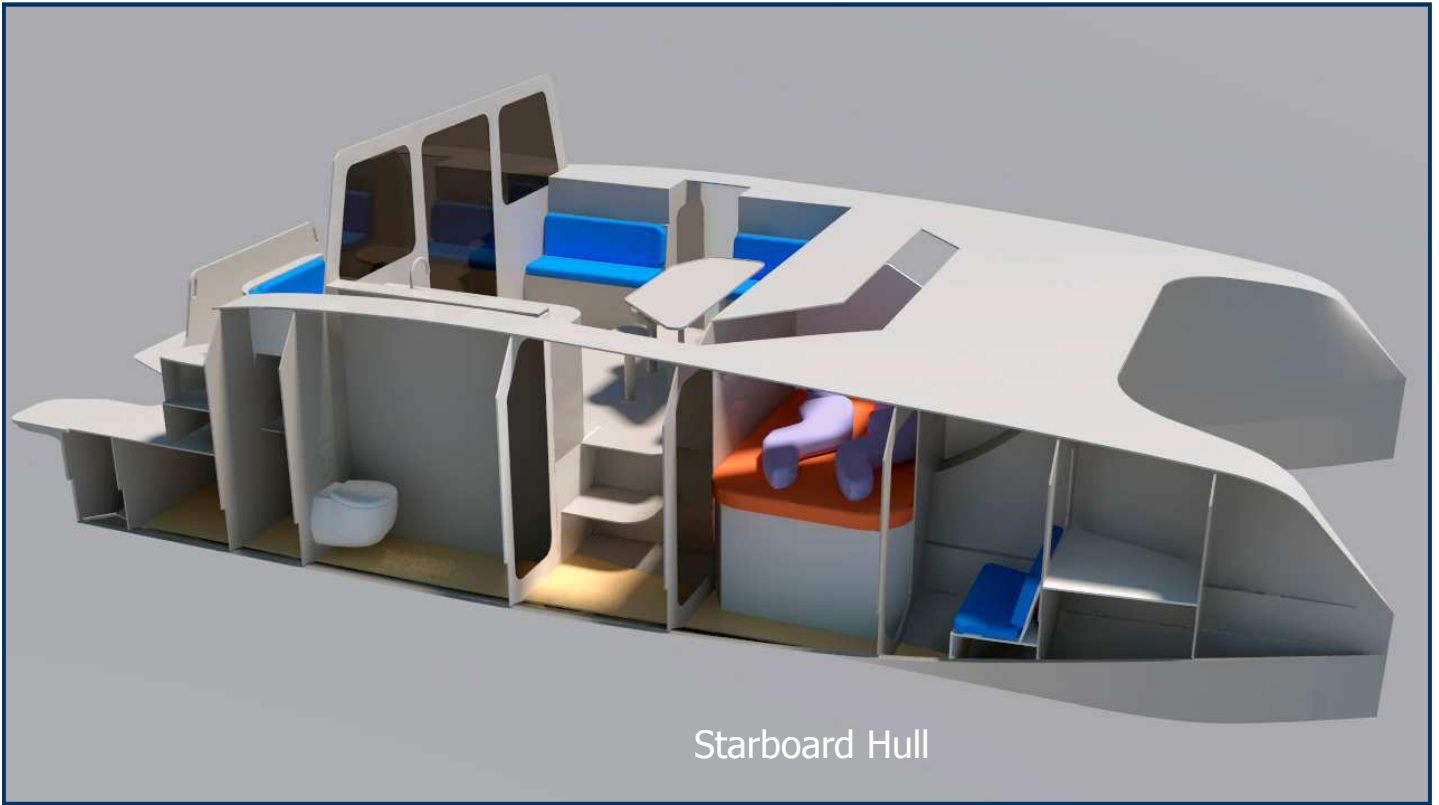
which are pre-glassed and pre-cut into a kit. The panels are joined then all the boat parts (held in the panels with small tags) are released and ready to tape together. There are no strip planked parts, no foam bows, no rudders, mostly just tapping parts together. The kit is very affordable too and includes the furniture kit as well as material for taping and fairing.

For a current kit price contact us.

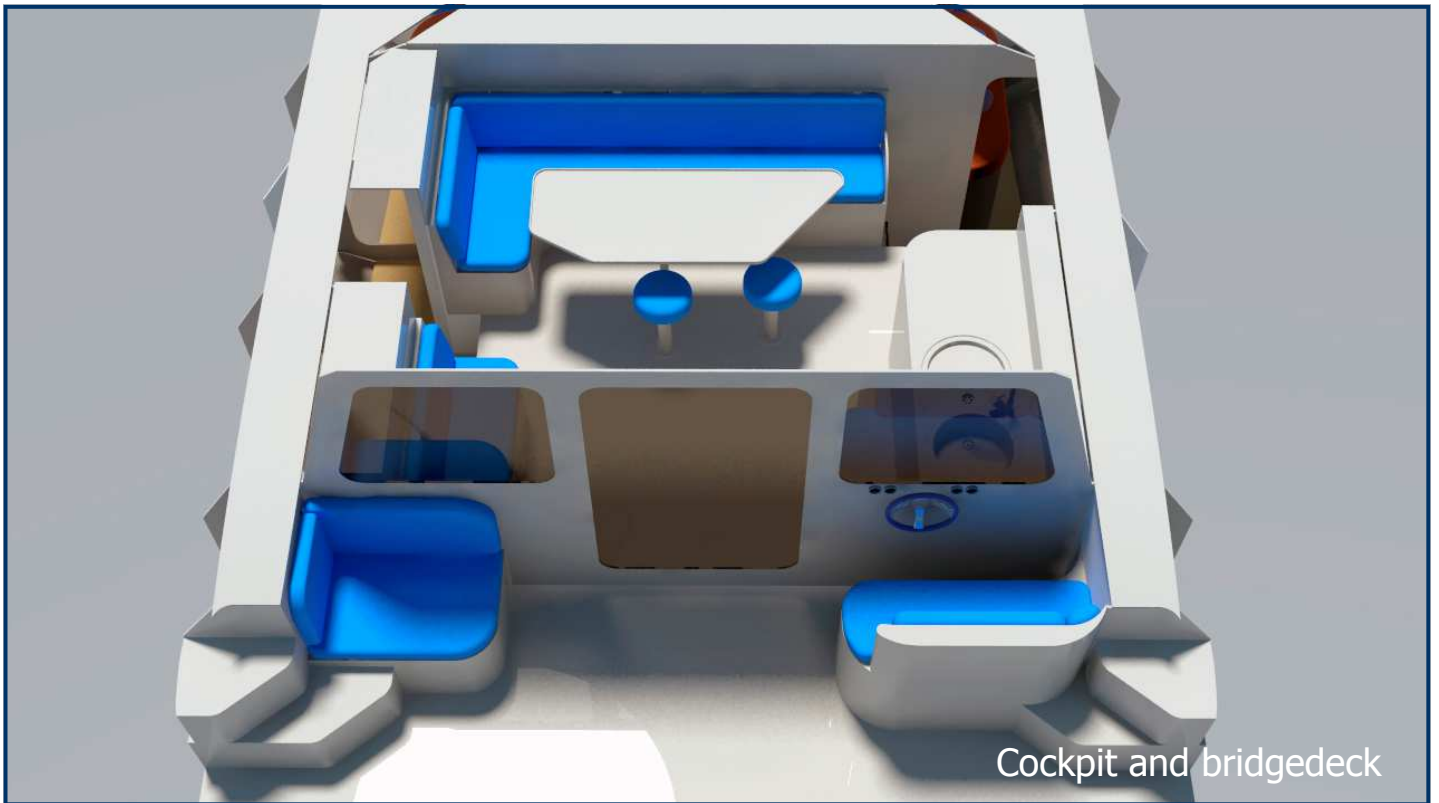
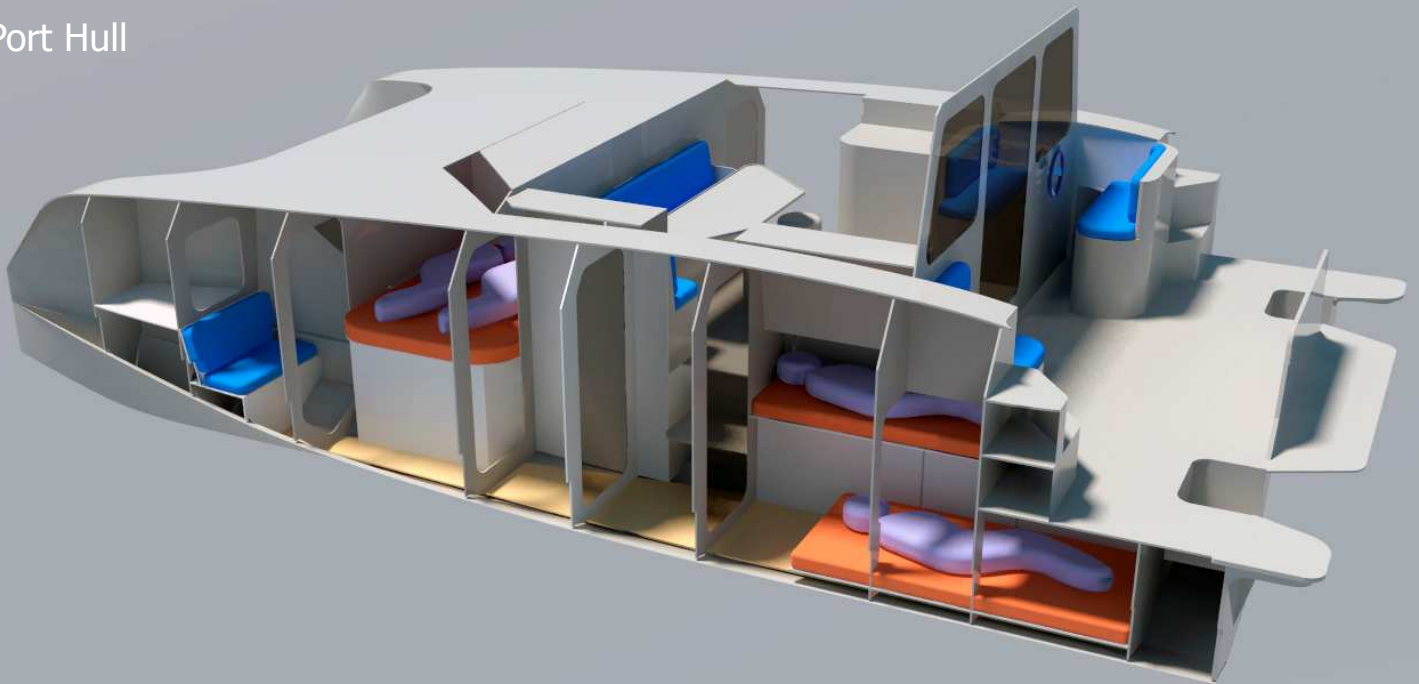


 **Schionning Designs**
www.schionningdesigns.com.au

Inside...



Port Hull



Cockpit and bridgedeck

Profile...



A 3D architectural rendering of a modern building, likely a stadium or arena. The structure features a curved, metallic facade and a large, curved roof structure. The building is shown from a low angle, emphasizing its scale and the dynamic, flowing lines of its design. The color palette is primarily metallic grays, with some blue and orange accents on the interior or structural elements. The text 'Bu' is visible at the bottom left corner.

This 3D perspective view shows the internal structure of the aircraft, including the engine, landing gear, and various internal components. The fuselage is shown in a cutaway view, revealing the internal layout and the placement of the engine and landing gear. The wing structure is also visible, showing the internal ribs and the placement of the engine. The landing gear is shown in a retracted position, and the engine is shown in a cutaway view, revealing the internal components. The overall structure is shown in a perspective view, highlighting the complex geometry of the aircraft.

A 3D perspective view of a ship's hull, showing the internal structure and the placement of various components like the engine, fuel tank, and water tank.



www.schionlingdesigns.com.au

These plans are for the construction of a single vessel; not to be reproduced or communicated without our written agreement.

DRAWN BY:

Michael van Schalkwyk

BOAT:

Growler GTR8800

TITLE:

Plan View: Dim Details

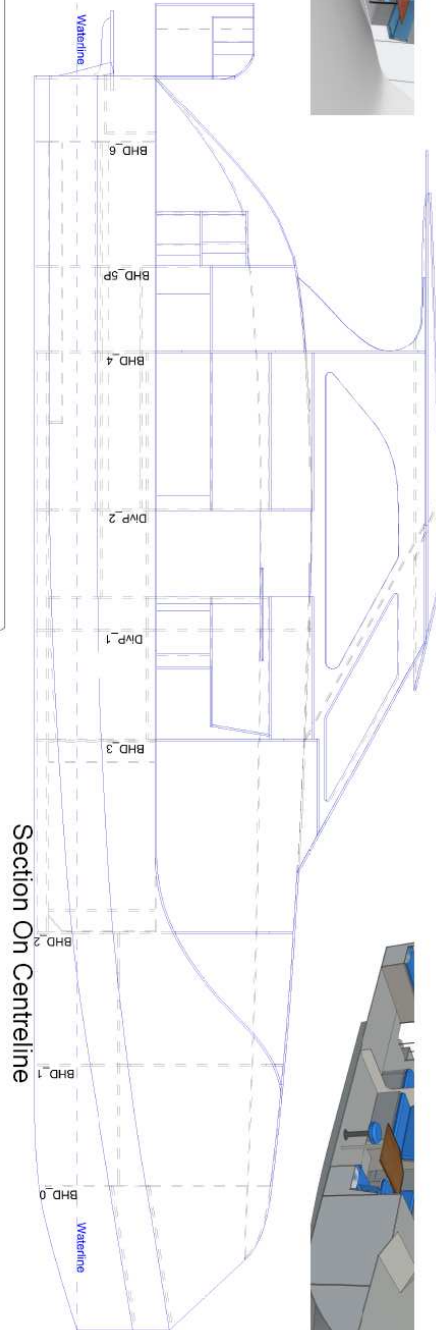
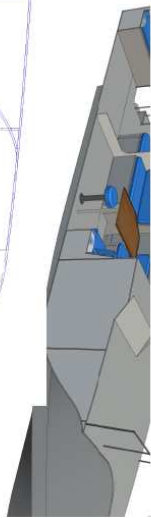
ALL DIMENSIONS
IN MILLIMETRES

LAST MODIFIED
24-10-2012

002

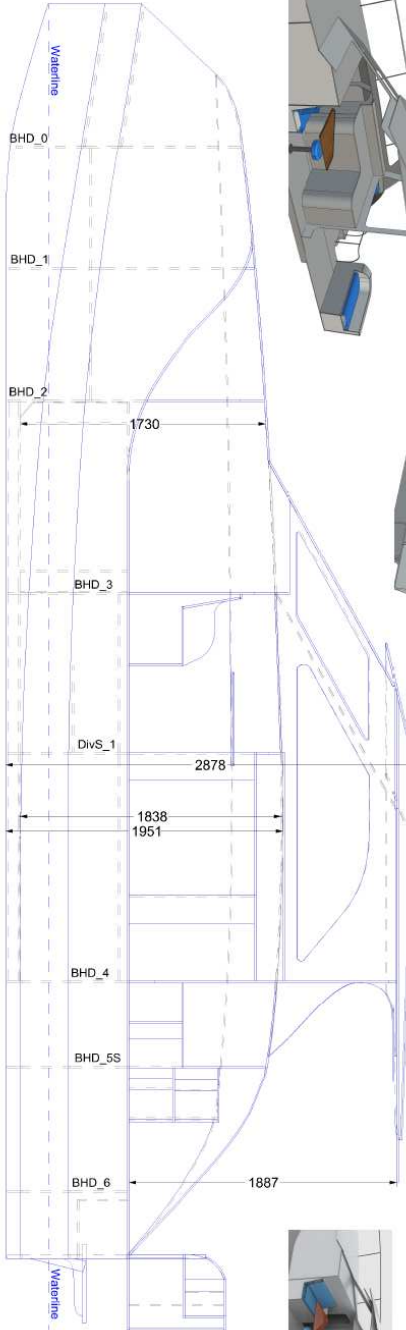
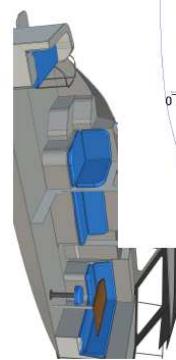
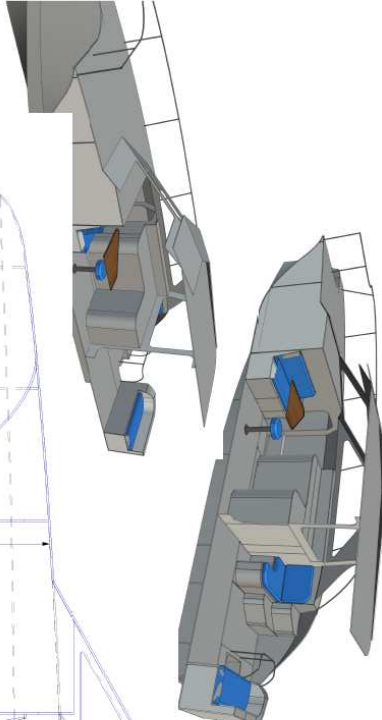


Port Side - Looking in from Starboard Side



Section On Centreline

Starboard Side - Looking in from Port Side



Section On Centreline

Schionning Designs

PTY. LTD.

www.schionningdesigns.com.au

These plans are for the construction of a single vessel and are not to be reproduced or communicated without our written agreement.

DRAWN BY:

Michael van Schaikwyk

BOAT:

Growler GTR8800

TITLE:

Section Views

A1 Scale: 1:15

ALL DIMENSIONS IN MILLIMETRES

LAST MODIFIED: 06-11-2012

DRAWING NO. 08

NOTES FROM THE DESIGNER....

The success of our designs I feel, stems from the practical commonsense approach of a boat builder, coupled with many years of live aboard experience and 50 - 60,000 sea miles in some of the worst conditions in the world. This experience makes one aware of the power of the sea and the need for a boat to be able to survive these conditions, protect her crew physically and psychologically as well as being a fast comfortable vehicle for all the good times. I am sure you will find our designs reflect our sailing and live-aboard experience and will give you the offshore confidence to cruise safely anywhere in the world. Multihulls are '*beautiful, safe, cruising boats*'. We hope you find them as exciting as we do.

CHOOSING A DESIGN...

Choosing a design can be difficult so we hope that this introduction helps clear the way a little. We've taken particular care with the balance of construction methods in our designs, making them light and strong yet easy to build in small sections, most of which are manageable by a group of friends when they need turning over and moving. The blend of strip planking and light flat panels kept in single plane form, makes building easy and quick and produces a finished catamaran of classic good looks which will not date quickly, giving you very good investment security.

One of the first steps in changing this dream into reality is figuring out whether you can afford the boat (or more likely, how much money you 'don't' have!). Two realities here are, firstly, two similar sized boats with similar displacement, built of similar materials will cost the same to build overall. Designers' estimates of materials are often inaccurate and sometimes minimized to lead one to believe their boat will be cheaper.

This is definitely not the case, ***similar boat, similar price!*** Your choice should therefore be towards the boat that suits you best and offers you good backup and is a good investment. Secondly, we know a lot of people who could not afford their boat at the onset so don't be discouraged. Once you start building it is surprising how you focus your interest, spare time and money into your new project. With our new owner-builders we suggest they start with the



smaller items which can be built in the garage, carport, (lounge?) etc. These initial items use very little material and money but use a lot of time, so at the early stages you can get a lot done while you wait for your old boat or car or house etc. to sell. These items are; flybridge, targa bar, cabin roof, rudders, dinghy etc. The experience and confidence gained building these bits speeds up the second stage of larger items and gets the whole project finished much sooner.

WHAT MAKES A GOOD MULTIHULL?

Cat design is not just a matter of two hulls floating a cabin above the water. Only in fairly recent years have the basic elements of design and an understanding of their effect on the use and performance of the finished boat been understood. The basic principles of good design should all be present in the boat you're considering building or buying. These will blend together to produce an excellent Multihull.

THE BASICS ELEMENTS OF A GOOD DESIGN:

- GOOD ENGINEERING is obviously essential.
- FLAT DECKS. The flatter deck lines have a number of advantages. Secure footing while on deck at any time in rough conditions, life lines are at a sensible protective height instead of set down a level. A flat deck is great for socializing, sunbathing or as a kids playground.
- BUOYANCY. Buoyancy distribution is the placement of buoyancy in the hulls. Our designs have between 50 and

"A power vessel that uses less fuel and is capable of running efficiently at higher speeds saves you money and time."

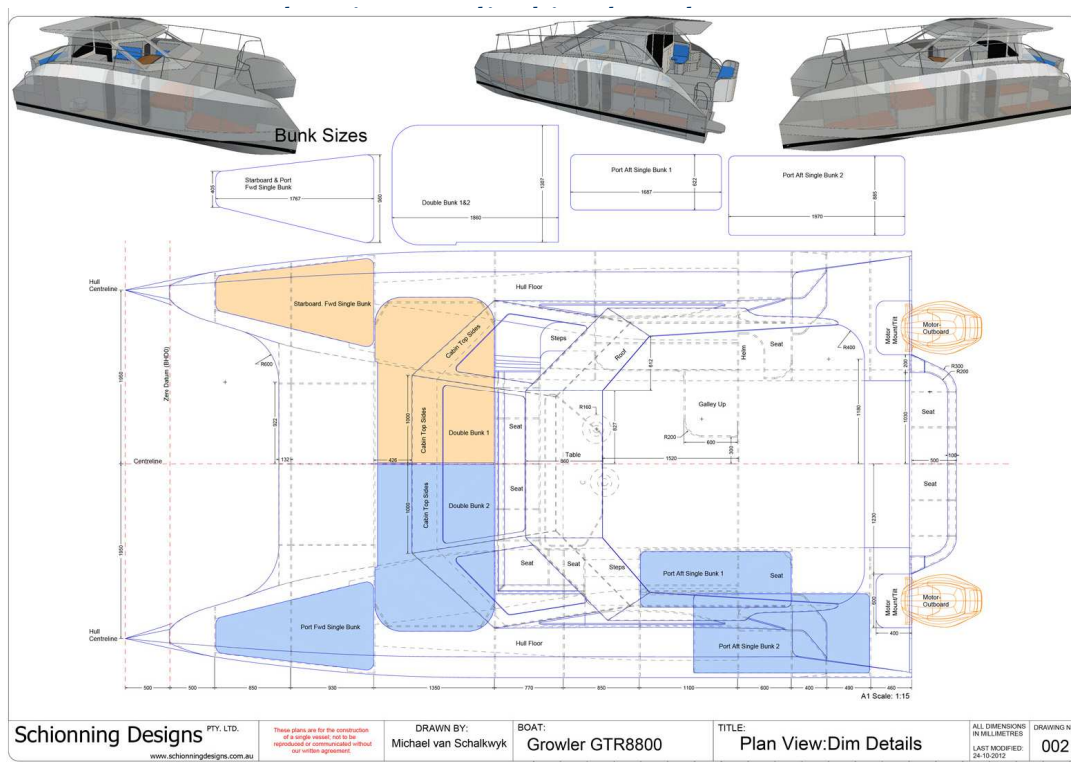
60 separate buoyancy tanks built into every shell so they are almost unsinkable. Most old designs hobbyhorse a lot making them uncomfortable and inefficient. Modern designs have the buoyancy pushed towards the hull ends damping down the hobby-horsing tendencies and giving a lot more safety downwind where the buoyant hulls stop nose-diving. Coupled with a lot of reserve buoyancy high up and forward in the hulls, this adds an enormous amount of safety and gives you confidence off the wind.

- A soft 'V'd entry, quickly picking up reserve buoyancy with lots of reserve

higher up is an ideal combination.

- BRIDGEDECK CLEARANCE. High Bridgedeck Clearance is essential. A short cabin length with long hull overhangs is a good safety feature. Good clearance on a planing hull cat would be 600mm – 800mm, or 1m—1.2m for a power cat running displacement hulls. Chamfer panels add high reserve buoyancy and need less clearance than a similar cat without them.
- FUEL ECONOMY AND CRUISING RANGE. When discussing sailing designs we often talk about speed and performance as being a real safety feature, and our power designs are no different. Good power designs should be capable of speed in all kinds of sea conditions safely, as severe weather can be outrun or avoided, and there is no need to spend time waiting for a gap in the weather. Fuel economy is important for saving you money, and time. Having a vessel that uses less fuel and is capable of running efficiently at higher speeds means less time at sea, more time fishing or relaxing on the beach and a smaller risk of bad weather while on that ocean passage or weekend trip. We feel a healthy fuel reserve is extremely important, and being able to carry enough fuel to get you safely there and back, and keep you going should something go wrong cannot be emphasized enough.

Construction Plans



The Growler 8800 plans are a mix of CAD drawn sheets, full size plots and hand drawn detail sheets.

Growler GTR8800 plans are AUD

\$8,800.00. The Growler GTR 8800 comes as a fully pre-cut materials kit and construction plans delivered to your door. Advice is readily available to help with your design choice and various options available. You will also receive full back-up support throughout your project.

UNLIMITED BACK UP SERVICE: Our back-up service is unlimited, we are here to guide you through any problems throughout your entire project. Email and phone support is available during business hours Monday to Friday.

HOW TO ORDER KIT: We require a signed and faxed or mailed PLAN ORDER FORM with every plan order. This form explains the terms and conditions and plans will not be mailed until a signed order form is received. See form

We look forward to hearing from you again and wish you the very best with your project.

1/38 Wanya Road, P.O. Box 55, Tea Gardens, NSW 2324
www.schionningdesigns.com.au info@schionningdesigns.com.au
Tel: +61 (0) 2 4997 9192

included in study plans.

PAYMENT: WE ACCEPT: Bank cheques or direct deposit into our bank account. Please email info@schionningdesigns.com.au for our account details. Credit cards are not accepted for plan purchases.

SHIPPING: Plans are sent by express mail within Australia and by courier overseas at no extra charge to you.

Building a boat is definitely a challenge but with good plans, our helpful friendly support and the modern materials available, it's never been easier. The investment of time and money is very worthwhile, offering a rich life experience, fun reward when you launch her and financially you can certainly stand to gain substantially.

HOW TO ORDER

HOW TO ORDER PLANS:

We require a signed and faxed or mailed PLAN ORDER FORM with every plan purchase. The Plan Purchase Order form explains our terms and conditions and plans will not be mailed until a signed order form is received. (See form included in study plans)

PAYMENT:

WE ACCEPT: Bank cheques or direct deposit into our bank account. Our account details are on the order form. Credit cards are not accepted for plan purchases.

SHIPPING:

Plans are sent by express mail within Australia and by courier to other countries at no extra charge to you.

HOW TO ORDER PLANS:

- Complete the attached PLAN PURCHASE ORDER form and mail or scan and email it back to us.
- Deposit payment to Schionning Design's Account, (details on order form).
- When payment and your order are received your construction plans will be assembled, checked and mailed within 7—10 days to your nominated address.

KIT ORDERS:

Construction plans must be ordered before (or at the same time) as your kit.

- Contact Schionning Designs for a KIT quote when you are ready to order your kit.
- We will invoice you for the kit, 50% of this invoice value is required upon order, deposit to the account as shown on the invoice.
- You will also be asked to complete a second order form for the kit and on this

form you will nominate whether you would like us to insure the kit during transit (cost is 0.75% of the invoice value) and you'll need to provide us the delivery address.

- We will notify you of the lead time (date) once the order is logged into the manufacturing schedule and we will contact you again about two weeks before your kit is ready for dispatch.
- You will then need to deposit the balance of the kit value, including freight and insurance if you nominated to use our services, into our account. Once this is received, the kit will be shipped to you.

ANY PROBLEMS, CONTACT US: +61 (02) 49 97 91 92

Building a boat is definitely a challenge but with good plans, our helpful friendly support and the modern materials available, it's never been easier. The investment of time and money is very worthwhile, offering a rich life experience, fun reward when you launch her and financially you can certainly stand to gain substantially. We look forward to hearing from you again and wish you the very best with your project.



Milski family on launch day.